

Important Notice: After update the firmware, you need to do the reset to the radio first, power off the radio first, then power it on while holding the PTT and the PF1 button below the PTT at the same time. The radio will start up with a note on the display stating MCU Reset, Please Wait – and do not turn the radio off while it restarts. ***** See the Separate FW Update Instructions for Details *****

- Install the Customer Program Software (CPS) by running the **D168UV_CPS_Setup_x.xx.exe** setup program in the CPS Program Folder
- After installing a new D168UV CPS version go to the top Menu -> Tool-> Options in the CPS to set APRS option as needed

Please make sure the codeplug is saved to PC before your do the update and reset.

D168UV --- Please use the firmware D168UV_Vx.xx for updating the radio.

D168UV firmware update V1.07 (dated 2025-6-14)

Change List

1. Resolve the issue that Satellite TX frequency is incorrect.
2. Resolve the issue that Satellite passes are inaccurate.

Firmware version: V1.07

CPS version: V1.07

Icon version: V1.34 (same, no need update)

SCT 3288 version: V3_01_01A5 (same, no need update)

D168UV firmware update V1.06 (dated 2025-4-29)

Change List

- 1.Resolve the issue that APRS doesn't work.
- 2.Resolve the issue that GPS info menu was missing the Edit button.
- 3.Resolve the issue that Satellite AOS limit doesn't work.
- 4.Resolve the issue that TOT Predict on Anytone 168UV does not work.
- 5.Resolve the issue that when listen to a Satellite, the radio doesn't have a sound when SQ set 0.
- 6.Improve the D168UV scan speed.
- 7.Resolve the issue that D168UV doesn't receive D878UV well in AES256/ARC4 communication.
- 8.Resolve the issue that D168UV can't receive digital repeater signal well in mixed mode.
- 9.Resolve the issue that the radio doesn't display the satellite name after load the the satellite information.

Firmware version: V1.06

CPS version: V1.06

Icon version: V1.34 (same, no need update)

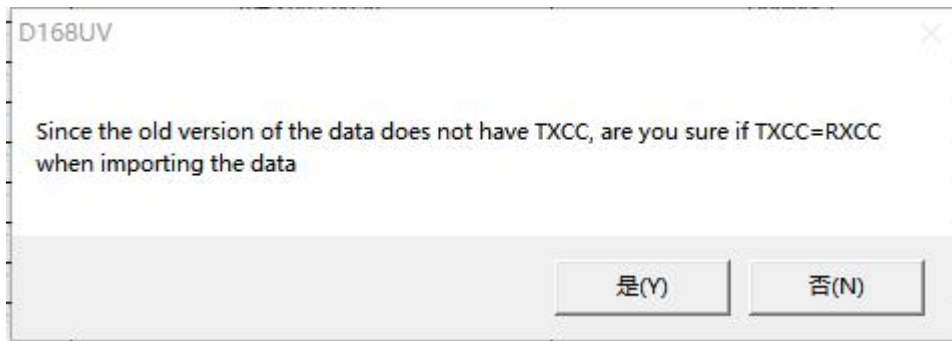
SCT 3288 version: V3_01_01A5 (same, no need update)

D168UV firmware update V1.05 (dated 2025-1-23)

Change List

3. Improve the scan speed.

4. Allows APRS Transmit under Satellite menu, press PTT+PF2 button to transmit the APRS. The APRS shall be set up in CPS->Tool->GPS Satellite Data Update -> AprsTxFreq(Hz).
5. Allows Arm CTCSS transmit under Satellite menu, press PTT+PF1 button to transmit the ArmCTC or DCS. The Arm CTC or Arm DCS shall be set up in CPS->Tool->GPS Satellite Data Update -> Arm CTC or Arm DCS first.
6. Separate the color code for TX and RX in channel setting. When you load the old. rdt file to the CPS, the CPS will come up with a screen to ask whether you want to let the TX CC same as RX CC, click on Yes will make the TX CC= RX CC.



7. Move CRC ignore into each channel setting instead of public settings for all channels.
8. CPS->Optional Setting ->Satellite->Sate Aos limit, allows to set up the Elevation/Degrees for the satellite.
9. CPS->Optional Setting ->Satellite->Sate Fix PointName 1-8, allows to set the name for Fixed location 1-8.
10. CPS->Optional Setting->Display->Night Start hour, Night Start Min, Night end hour and Night end Min, it allows to set up the Night time, the radio will switch to night mode automatically in the night time period.
11. CPS->Tool->GPS Satellite Data Update, allows to import and export the satellite data in .CSV file format.

Firmware version: V1.05

CPS version: V1.05

Icon version: V1.34 (same, no need update)

SCT 3288 version: V3_01_01A5 (same, no need update)

D168UV firmware update V1.04 (dated 2024-12-3)

Change List

12. AES256 function – Improve the issue that D168UV work incorrectly on AES256 transmission.
13. Mic function – Improve the issue that some radios have low transmit audio.
14. Ext speaker microphone – Improve the issue that using FW 1.03 with ext mic speaker on a Dmr repeater channel, if the repeater doesn't reply when I push PTT, no tone is played.

Firmware version: V1.04

CPS version: V1.04

Icon version: V1.34 (same, no need update)

SCT 3288 version: V3_01_01A5 (same, no need update)

D168UV firmware update V1.03 (dated 2024-11-16)

Change List

15. Satellite function – Allows set up power for Satellite separately from channel power. Press * key to switch the power level when the radio is in Satellite mode.
16. Satellite function – Improve the issue that radio stuck during predicting.

17. Satellite function – Allow the radio stay at the satellite menu, ignore the menu exit time setting. The radio will exit Satellite menu by pressing the return key only.
18. Satellite function – The CPS->tool->Satellite Data Updating, this page is updated to allow input different download link for satellite information update use.
19. In CPS->Digital->Master ID, allows set up a Master ID for the radio. In radio menu ->Setting->Channel Set-> Radio ID, if you select the master ID in a channel, all the channels will switch to use master ID, it is a public setting for all channels. It is helpful when you temporarily lending out radios.
20. In radio menu ->GPS-> GPS Info, allows to save the GPS position to fixed beacon.
21. CPS->Tool -> Radio recording, update the recording page.

Firmware version: V1.03

CPS version: V1.03

Icon version: V1.34

SCT 3288 version: V3_01_01A5